

PrestoSmartSwing StrategyWrite up

Overview: Basically PrestoSmartSwing Strategy is a decision making and execution strategy which manages the order execution of one or multiple clients as per execution logic defined by user. This is an intraday strategy. This strategy could be used in CASH and Future segment.

Input screen: Following is the screen (Dashboard) for starting and monitoring the strategy.



Input Parameters:

- i. Following inputs are provided through CSV file:-
 - (a) **Account:** User account
 - (b) **Capital:** Capital used to place entry orders.
- ii. Following inputs are provided through UI
 - (a) **StartTime:** Strategy will start at this time.
 - (b) **CutoffTime:** The time after which no entry won't be allowed.
 - (c) **EndTime:** Strategy will stop at this time.
 - (d) **CandleSize:** The time interval in which candle would be formed.



(e) **TimeOut:** At this time, strategy will place square off order for open positions

(f) **Entry range:** The limit beyond which no entry execution would be done

(g) **Exit range:** The limit beyond which no exit execution would be done

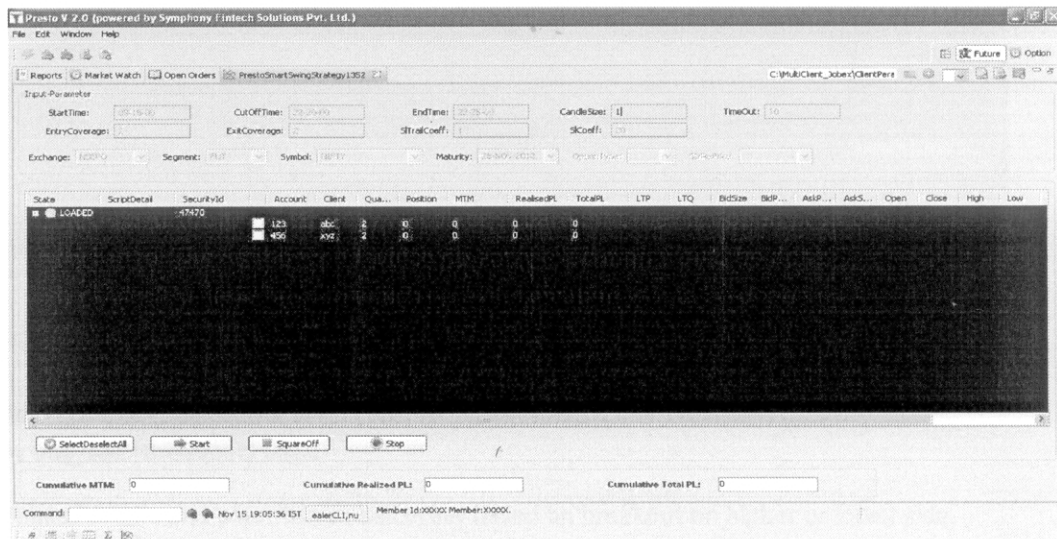
(h) **SlTrailCoeff:** This is the move of LTP in favorable direction to trail stop loss

(i) **SlCoeff:** Stop loss to be placed with the price after entry

(j) **Exchange:** Exchange segment in which trading to be done

(k) **Symbol:** Symbol in which trading to be done

(l) **Maturity:** Expiry date and month of the contract of the symbol



Strategy Monitoring View:

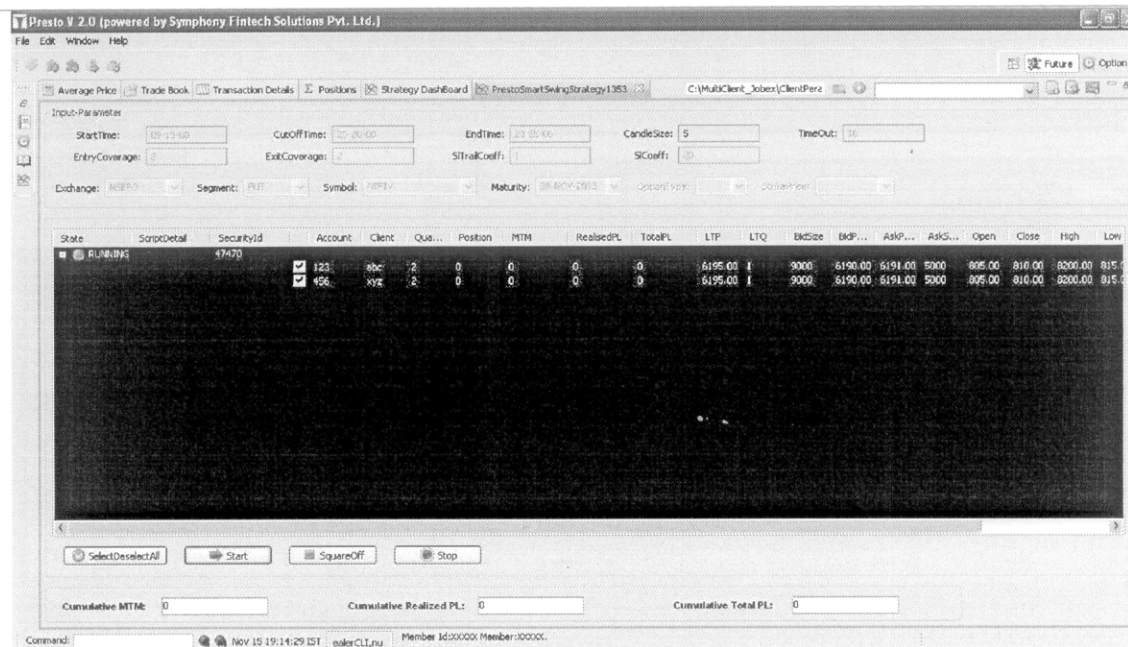
Once strategy gets started and entry is made then it is visible in Monitoring view.



Symphony Fintech Solutions Pvt Ltd*(formerly known as Comtel Infotech Pvt Ltd)*

11, Shreepal Complex, Suren Road, Chakala, Andheri (East), Mumbai 400 093, India.

Tel: +91-22-4019 0900 • Email: info@symphonyfintech.com • Web: www.symphonyfintech.com



It provides action buttons to control the start/stop, square off symbols.

Strategy logic:**(1) First entry buy/sell (Breakout) Logic**

(a) Strategy makes candle and place buy or sell order based on breakout on higher or lower side.

(b) Stop loss and trailing: Strategy trail as per trail coefficient when market moves in favourable direction.

(ii) **Stop and Reverse (SAR):** on hitting stop loss strategy will close earlier positions and re enter with the given quantity.

(iii) Square off feature:

(a) **Manual Square off:** Strategy will place square off orders at square off time

(b) **End time square off:** strategy will cancel SL order and will place orders to square off existing positions.

Net Position report:

Following is the screen to view Net Position report of the strategy:



Symphony Fintech Solutions Pvt Ltd
(formerly known as Comtel Infotech Pvt Ltd)

11, Shreepal Complex, Suren Road, Chakala, Andheri (East), Mumbai 400 093, India.
Tel: +91-22-4019 0900 • Email: info@symphonyfintech.com • Web: www.symphonyfintech.com



Presto V 2.0 (powered by Symphony Fintech Solutions Pvt. Ltd.)

File Edit Window Help

Reports Market Watch Open Orders PrestoSmartSwingStrategy1352

Symphony Report Viewer

Showing page 1 of 1

Go to page: 1

Net Position Reports of Dealer(FO)

User	SecurityID	Symbol	Exp.Date	Trade Time	Option Type	Strike Price	Buy Qty	Sell Qty	Buy Value(Rs.)	Sell Value(Rs.)	Buy Avg Price(Rs)	Sell Avg Price(Rs)	Net A
DealerCLI													
	47470	NIFTY	28NOV13	2013-11-15 19:11:40	N/A	N/A	200	200	1,238,233.60	1,252,042.50	6,191.16800	6,260.21250	69.042
Total									1,238,233.60	1,252,042.50			

Done

Command: Nov 15 19:17:46 IST eelerCLI/nu Member Id:XXXX Member XXXXX



Handwritten signature